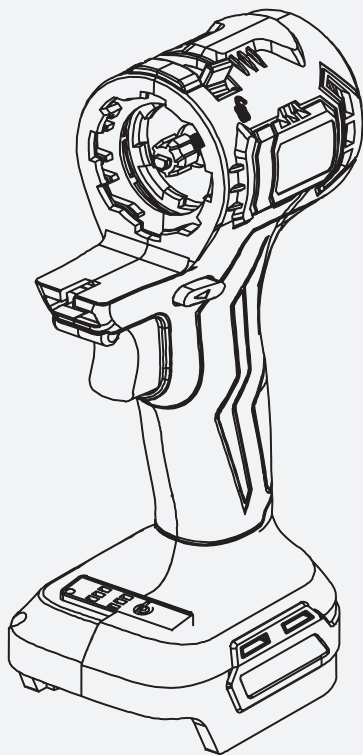
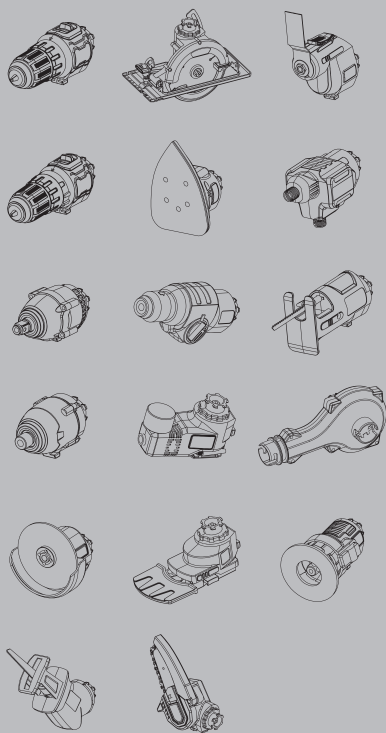


CORDLESS MULTI TOOL

INSTRUCTION MANUAL



IMPORTANT: Read Before Using.



CORDLESS MULTI TOOL INSTRUCTION MANUAL CATALOG

Power unit.....	01
Impact Drill attachment.....	05
Impact driver attachment.....	07
Impact wrench attachment.....	08
Oscillating tool attachment.....	09
Sander attachment.....	10
Jig saw attachment.....	11
Reciprocating saw attachment.....	12
Chain Saw attachment.....	13
Cleaning machine attachment.....	14
Blower attachment.....	15
Angle Grinder attachment.....	16
Combination Hammer attachment.....	17
Hedge Trimmer attachment.....	18
Inflator attachment.....	19
Trimmer attachment.....	20
Circular Saw attachment.....	21

SAFETY WARNINGS

General power tool safety warnings

WARNING: Read all safety warnings, instructions, illustrations and specifications provided with this power tool. Failure to follow all instructions listed below may result in electric shock, fire and/or serious injury.

Save all warnings and instructions for future reference.

The term "power tool" in the warnings refers to you mains-operated (corded) power tool or battery-operated (cordless) power tool.

Work area safety

1. Keep work area clean and well lit. Cluttered or dark areas invite accidents.
2. Do not operate power tools in explosive atmospheres, such as in the presence of flammable liquids, gases or dust. Power tools create sparks which may ignite the dust or fumes.
3. Keep children and bystanders away while operating a power tool. Distractions can cause you to lose control.

Electrical Safety

1. Power tool plugs must match the outlet. Never modify the plug in any way. Do not use any adapter plugs with earthed (grounded) power tools. Unmodified plugs and matching outlets will reduce risk of electric shock.
2. Avoid body contact with earthed or grounded surfaces, such as pipes, radiators, ranges and refrigerators. There is an increased risk of electric shock if your body is earthed or grounded.
3. Do not expose power tools to rain or wet conditions. Water entering a power tool will increase the risk of electric shock.
4. Do not abuse the cord. Never use the cord for carrying, pulling or unplugging the power tool. Keep cord away from heat, oil, sharp edges or moving parts. Damaged or entangled cords increase the risk of electric shock.
5. When operating a power tool outdoors, use an extension cord suitable for outdoor use. Use of a cord suitable for outdoor use reduces the risk of electric shock.
6. If operating a power tool in a damp location is unavoidable, use a ground fault circuit interrupter (GFCI) protected supply. Use of a GFCI reduces the risk of electric shock.
7. Power tools can produce electromagnetic fields (EMF) that are not harmful to the user. However, users of pacemakers and other similar medical devices should contact the maker of their device and/or doctor for advice before operating this power tool.

Personal Safety

1. Stay alert, watch what you are doing and use common sense when operating a power tool. Do not use a power tool while you are tired or under the influence of drugs, alcohol or medication. A moment of inattention while operating power tools may result in serious personal injury.
2. Use personal protective equipment. Always wear eye protection. Protective equipment such as dust mask, non-skid safety shoes, hard hat, or hearing protection used for appropriate conditions will reduce personal injuries.
3. Prevent unintentional starting. Ensure the switch is in the off-position before connecting to power source and/or battery pack, picking up or carrying the tool. Carrying power tools with your finger on the switch or energising power tools that have the switch on invites accidents.
4. Remove any adjusting key or wrench before turning the power tool on. A wrench or a key left attached to a rotating part of the power tool may result in personal injury.
5. Do not over reach. Keep proper footing and balance at all times. This enables better control of the power tool in unexpected situations.
6. Dress properly. Do not wear loose clothing or jewellery. Keep your hair, clothing and gloves away from moving parts. Loose clothes, jewellery or long hair can be caught in moving parts.
7. If devices are provided for the connection of dust extraction and collection facilities, ensure these are connected and properly used. Use of dust collection can reduce dust-related hazards.
8. Do not let familiarity gained from frequent use of tools allow you to become complacent and ignore tool safety principles. A careless action can cause severe injury within a fraction of a second.
9. Always wear protective goggles to protect your eyes from injury when using power tools. The goggles must comply with ANSI Z87.1 in the USA.

It is an employer's responsibility to enforce the use of appropriate safety protective equipment by the tool operators and by other persons in the immediate working area.

Power tool use and care

1. Do not force the power tool. Use the correct power tool for your application. The correct power tool will do the job better and safer at the rate for which it was designed.
2. Do not use the power tool if the switch does not turn it on and off. Any power tool that cannot be controlled with the switch is dangerous and must be repaired.
3. Disconnect the plug from the power source and/or remove the battery pack, if detachable, from the power tool before making any adjustments, changing accessories, or storing power tools. Such preventive safety measures reduce the risk of starting the power tool accidentally.
4. Store idle power tools out of the reach of children and do not allow persons unfamiliar with the power tool or these instructions to operate the power tool. Power tools are dangerous in the hands of untrained users.

- Maintain power tools and accessories. Check for misalignment or binding of moving parts, breakage of parts and any other condition that may affect the power tool's operation. If damaged, have the power tool repaired before use. Many accidents are caused by poorly maintained power tools.
- Keep cutting tools sharp and clean. Properly maintained cutting tools with sharp cutting edges are less likely to bind and are easier to control.
- Use the power tool, accessories and tool bits etc. in accordance with these instructions, taking into account the working conditions and the work to be performed. Use of the power tool for operations different from those intended could result in a hazardous situation.
- Keep handles and grasping surfaces dry, clean and free from oil and grease. Slippery handles and grasping surfaces do not allow for safe handling and control of the tool in unexpected situations.
- When using the tool, do not wear cloth work gloves which may be entangled. The entanglement of cloth work gloves in the moving parts may result in personal injury.

Battery tool use and care

- Recharge only with the charger specified by the manufacturer. A charger that is suitable for one type of battery pack may create a risk of fire when used with another battery pack.
- Use power tools only with specifically designated battery packs. Use of any other battery packs may create a risk of injury and fire.
- When battery pack is not in use, keep it away from other metal objects, like paper clips, coins, keys, nails, screws or other small metal objects, that can make a connection from one terminal to another. Shorting the battery terminals together may cause burns or a fire.
- Under abusive conditions, liquid may be ejected from the battery; avoid contact. If contact accidentally occurs, flush with water. If liquid contacts eyes, additionally seek medical help. Liquid ejected from the battery may cause irritation or burns.
- Do not use a battery pack or tool that is damaged or modified. Damaged or modified batteries may exhibit unpredictable behaviour resulting in fire, explosion or risk of injury.
- Do not expose a battery pack or tool to fire or excessive temperature. Exposure to fire or temperature above 130 °C may cause explosion.
- Follow all charging instructions and do not charge the battery pack or tool outside the temperature range specified in the instructions. Charging improperly or at temperatures outside the specified range may damage the battery and increase the risk of fire.

Service

- Have your power tool serviced by a qualified repair person using only identical replacement parts. This will ensure that the safety of the power tool is maintained.
- Never service damaged battery packs. Service of battery packs should only be performed by the manufacturer or authorized service providers.
- Follow instruction for lubricating and changing accessories.
- Do not modify or attempt to repair the appliance or the battery pack except as indicated in the instructions for use and care.

Cordless multi tool attachment safety warnings

WARNING: Always don't press the switch before installing attachment.

- Before using battery cartridge, read all instructions and cautionary markings on (1) battery charger, (2) battery, and (3) product using battery.
- Do not disassemble battery cartridge.
- If operating time has become excessively shorter, stop operating immediately. It may result in a risk of overheating, possible burns and even an explosion.
- If electrolyte gets into your eyes, rinse them out with clear water and seek medical attention right away. It may result in loss of your eyesight.
- Do not short the battery cartridge:

- Do not touch the terminals with any conductive material.
- Avoid storing battery cartridge in a container with other metal objects such as nails, coins, etc.
- Do not expose battery cartridge to water or rain.

A battery short can cause a large current flow, overheating, possible burns and even a breakdown.

- Do not store the tool and battery cartridge in locations where the temperature may reach or exceed 50 °C (122 °F).
- Do not incinerate the battery cartridge even if it is severely damaged or is completely worn out. The battery cartridge can explode in a fire.
- Be careful not to drop or strike battery.
- Do not use a damaged battery.
- The contained lithium-ion batteries are subject to the Dangerous Goods Legislation requirements. For commercial transports e.g. by third parties, forwarding agents, special requirement on packaging and labeling must be observed. For preparation of the item being shipped, consulting an expert for hazardous material is required. Please also observe possibly more detailed national regulations. Tape or mask off open contacts and pack up the battery in such a manner that it cannot move around in the packaging.
- Follow your local regulations relating to disposal of battery.

SAVE THESE INSTRUCTIONS.

CAUTION: Only use genuine batteries.

Use of non-genuine batteries, or batteries that have been altered, may result in the battery bursting causing fires, personal injury and damage. It will also void the warranty for the tool and charger.

Tips for maintaining maximum battery life

1. Charge the battery cartridge before completely discharged. Always stop tool operation and charge the battery cartridge when you notice less tool power.
2. Never recharge a fully charged battery cartridge. Overcharging shortens the battery service life.
3. Charge the battery cartridge with room temperature at 10 °C - 40 °C (50 °F - 104 °F). Let a hot battery cartridge cool down before charging it.
4. Charge the battery cartridge if you do not use it for a long period (more than six months).

FUNCTIONAL DESCRIPTION

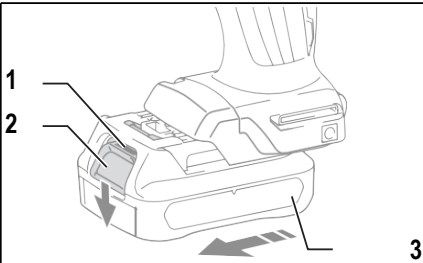
CAUTION: Always be sure that the tool is switched off and the battery cartridge is removed before adjusting or checking function on the tool.

Installing or removing battery cartridge

CAUTION: Always switch off the tool before installing or removing of the battery cartridge.

CAUTION: Hold the tool and the battery cartridge firmly when installing or removing battery cartridge.

Failure to hold the tool and the battery cartridge firmly may cause them to slip off your hands and result in damage to the tool and battery cartridge and a personal injury.



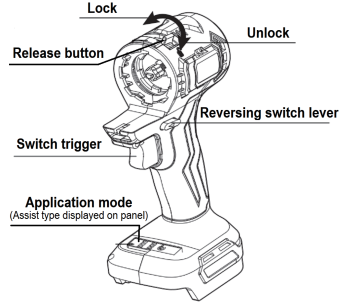
▶ 1. Red indicator 2. Button 3. Battery cartridge

To remove the battery cartridge, slide it from the tool while sliding the button on the front of the cartridge. To install the battery cartridge, align the tongue on the battery cartridge with the groove in the housing and slip it into place. Insert it all the way until it locks in place with a little click. If you can see the red indicator on upper side of the button, it is not locked completely.

Tool / battery protection system

The tool is equipped with a tool/battery protection system. This system automatically cuts off power to the motor to extend tool and battery life. The tool will automatically stop during operation if the tool or battery is placed under one of the following conditions:

Power unit



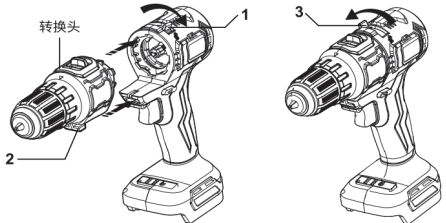
SPECIFICATIONS

Model:	DYB-21BL
Rated voltage	D.C. 18 V - 21 V max
No load speed (RPM)	0 - 13,000 /min
	0 - 20,000 /min
	0 - 24,000 /min
Net weight	0.56kg

- Due to our continuing program of research and development, the specifications herein are subject to change without notice.
- Specifications may differ from country to country.

OPERATION

Optional accessory

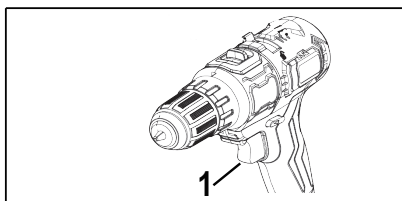


Installing or removing driver

- Install the attachments: Push the attachment release button to the unlock symbol (Fig1). Align the attachment locating block with the locating guide and push the attachment parallel to the bottom of the power unit (Fig 2). Push the attachment release button in the lock direction (Fig3).
- Remove the attachments: Push the attachment release button to the unlock symbol (Fig1). Pull the attachments out parallel.

CAUTION: Always be sure that the tool is switched off and the battery cartridge is removed before carrying out any work on the tool.

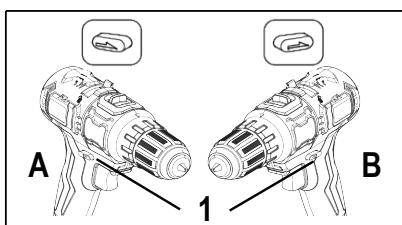
Switch action



1. Switch trigger

To start the tool, simply pull the switch trigger. Tool speed is increased by increasing pressure on the switch trigger. Release the switch trigger to stop.

Reversing switch action

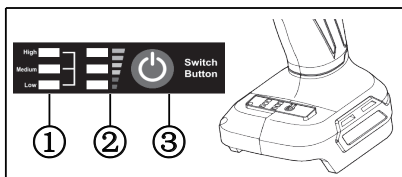


► 1. Reversing switch lever

This tool has a reversing switch to change the direction of rotation. Depress the reversing switch lever from the A side for clockwise rotation or from the B side for counterclockwise rotation.

When the reversing switch lever is in the neutral position, the switch trigger cannot be pulled.

Application mode



► ①. Application mode

High
Medium
Low

► ③. Application mode(Button)

Indicating the remaining battery

► ②. Indicator lamps



75% to 100%



50% to 75%



25% to 50%

NOTE: Depending on the conditions of use and the ambient temperature, the indication may differ slightly from the actual capacity.

Cordless multi tool attachment safety warnings

WARNING: Always don't press the switch before installing attachment.

Cordless hammer driver drill safety warnings

Safety instructions for all operations

1. **Wear ear protectors when impact drilling.**
Exposure to noise can cause hearing loss.
2. **Use auxiliary handle(s), if supplied with the tool.** Loss of control can cause personal injury.
3. **Hold power tool by insulated gripping surfaces, when performing an operation where the cutting accessory may contact hidden wiring.** Cutting accessory contacting a "live" wire may make exposed metal parts of the power tool "live" and could give the operator an electric shock.
4. **Hold power tool by insulated gripping surfaces, when performing an operation where the fastener may contact hidden wiring.** Fasteners contacting a "live" wire may make exposed metal parts of the power tool "live" and could give the operator an electric shock.
5. **Always be sure you have a firm footing. Be sure no one is below when using the tool in high locations.**
6. **Hold the tool firmly.**
7. **Keep hands away from rotating parts.**
8. **Do not leave the tool running. Operate the tool only when hand-held.**
9. **Do not touch the bit or the workpiece immediately after operation; they may be extremely hot and could burn your skin.**
10. **Some material contains chemicals which may be toxic. Take caution to prevent dust inhalation and skin contact. Follow material supplier safety data.**
11. **If the drill bit cannot be loosened even you open the jaws, use pliers to pull it out.** In such a case, pulling out the drill bit by hand may result in injury by its sharp edge.

SAVE THESE INSTRUCTIONS.

WARNING: DO NOT let comfort or familiarity with product (gained from repeated use) replace strict adherence to safety rules for the subject product. MISUSE or failure to follow the safety rules stated in this instruction manual may cause serious personal injury.

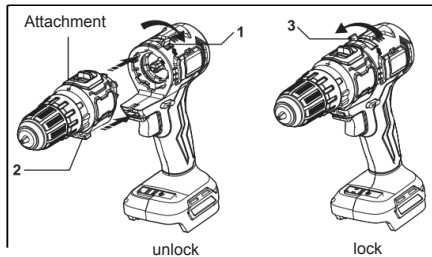
Impact Drill attachment

SPECIFICATIONS

Model:	DYB-2103
Chuck size	10mm
Torque	32N.m
Clutch setting	25+1
No load speed (RPM)	0 - 400/0-1,450 /min
Blows per minute	0-6,000 / 0 - 21,000 /min
Net weight	0.49kg

- Due to our continuing program of research and development, the specifications herein are subject to change without notice.
- Specifications may differ from country to country.

OPERATION

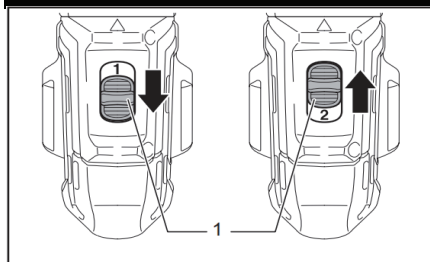


Installing or removing driver

- Install the attachments: Push the attachment release button to the unlock symbol (Fig1). Align the attachment locating block with the locating guide and push the attachment parallel to the bottom of the power unit (Fig. 2). Push the attachment release button in the lock direction (Fig3).
- Remove the attachments: Push the attachment release button to the unlock symbol (Fig1). Pull the attachments out parallel.

CAUTION: Always be sure that the tool is switched off and the battery cartridge is removed before carrying out any work on the tool.

Speed change



- 1. Speed change lever

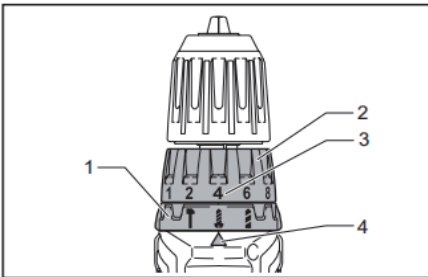
CAUTION: Always set the speed change lever fully to the correct position. If you operate the tool with the speed change lever positioned halfway between the "1" side and "2" side, the tool may be damaged.

Position of speed change lever	Speed	Torque	Applicable operation
1	Low	High	Heavy loading operation
2	High	Low	Light loading operation

Selecting the action mode

CAUTION: Always set the ring correctly to your desired mode mark. If you operate the tool with the ring positioned halfway between the mode marks, the tool may be damaged.

CAUTION: When you change the position from "1" to other modes, it may be a little difficult to slide the action mode changing ring. In this case, switch on and run the tool for a second at the "1" position, then stop the tool and slide the ring to your desired position.



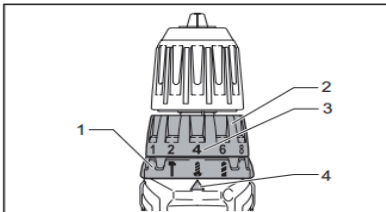
► 1. Action mode changing ring 2. Adjusting ring
3. Graduation 4. Arrow

This tool has three action modes.

- Drilling mode (rotation only)
- Hammer drilling mode (rotation with hammering)
- Screwdriving mode (rotation with clutch)

Select one mode suitable for your work. Turn the action mode changing ring and align the mark that you selected with the arrow on the tool body.

Adjusting the fastening torque



► 1. Action mode changing ring 2. Adjusting ring
3. Graduation 4. Arrow

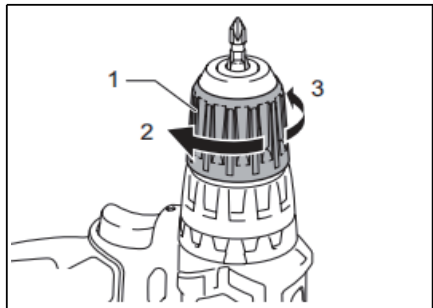
The fastening torque can be adjusted in 25 levels by turning the adjusting ring. Align the graduations with the arrow on the tool body. You can get the minimum fastening torque at 1 and maximum torque at 25.

Before actual operation, drive a trial screw into your material or a piece of duplicate material to determine which torque level is required for a particular application.

ASSEMBLY

CAUTION: Always be sure that the tool is switched off and the battery cartridge is removed before carrying out any work on the tool.

Installing or removing driver bit/drill bit



► 1. Sleeve 2. Close 3. Open

Turn the sleeve counterclockwise to open the chuck jaws. Place the driver bit/drill bit in the chuck as far as it will go. Turn the sleeve clockwise to tighten the chuck. To remove the driver bit/drill bit, turn the sleeve counterclockwise.

Cordless multi tool attachment safety warnings

WARNING: Always don't press the switch before installing attachment.

Cordless impact driver safety warnings

1. Hold the power tool by insulated gripping surfaces, when performing an operation where the fastener may contact hidden wiring. Fasteners contacting a "live" wire may make exposed metal parts of the power tool "live" and could give the operator an electric shock.
2. **Always be sure you have a firm footing. Be sure no one is below when using the tool in high locations.**
3. Hold the tool firmly.
4. Wear ear protectors.
5. Do not touch the bit or the workpiece immediately after operation. They may be extremely hot and could burn your skin.
6. Keep hands away from rotating parts.
7. Use auxiliary handle(s), if supplied with the tool. Loss of control can cause personal injury.
8. Hold the power tool by insulated gripping surfaces, when performing an operation where the cutting accessory may contact hidden wiring. Cutting accessory contacting a "live" wire may make exposed metal parts of the power tool "live" and could give the operator an electric shock.

SAVE THESE INSTRUCTIONS.

WARNING: DO NOT let comfort or familiarity with product (gained from repeated use) replace strict adherence to safety rules for the subject product. MISUSE or failure to follow the safety rules stated in this instruction manual may cause serious personal injury.

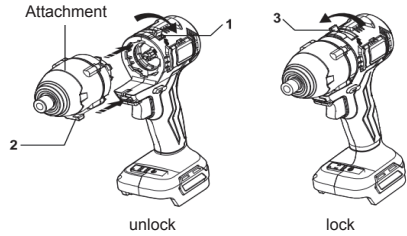
Impact driver attachment

SPECIFICATIONS

Model:	DYB-2104
Chuck size	1/4 (6.35mm)
Torque	180N.m
No load speed (RPM)	0-3,300 /min
Blows per minute	0 - 3,600 /min
Net weight	0.51kg

- Due to our continuing program of research and development, the specifications herein are subject to change without notice.
- Specifications may differ from country to country.

OPERATION



Installing or removing driver

- Install the attachments: Push the attachment release button to the unlock symbol (Fig1). Align the attachment locating block with the locating guide and push the attachment parallel to the bottom of the power unit (Fig. 2). Push the attachment release button in the lock direction (Fig3).

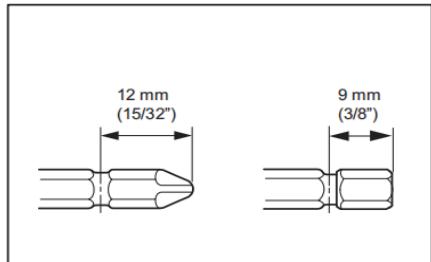
- Remove the attachments: Push the attachment release button to the unlock symbol (Fig1). Pull the attachments out parallel.

CAUTION: Always be sure that the tool is switched off and the battery cartridge is removed before carrying out any work on the tool.

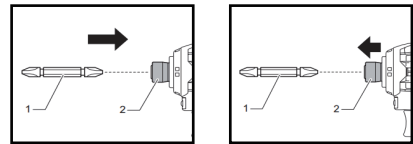
ASSEMBLY

CAUTION: Always be sure that the tool is switched off and the battery cartridge is removed before carrying out any work on the tool.

Installing or removing driver bit/ socket bit



Use only the driver bit/socket bit shown in the figure. Do not use any other driver bit/socket bit.



► 1. Driver bit 2. Sleeve

To install the driver bit, insert it into the sleeve as far as it will go.

To remove the driver bit, pull the sleeve in the direction of the arrow and pull the driver bit out.

Cordless multi tool attachment safety warnings

WARNING: Always don't press the switch before installing attachment.

Cordless impact wrench safety warnings

1. Hold the power tool by insulated gripping surfaces, when performing an operation where the fastener may contact hidden wiring. Fasteners contacting a "live" wire may make exposed metal parts of the power tool "live" and could give the operator an electric shock.
2. Wear ear protectors.
3. Check the impact socket carefully for wear, cracks or damage before installation.
4. Hold the tool firmly.
5. Keep hands away from rotating parts.
6. Do not touch the impact socket, bolt, nut or the workpiece immediately after operation. They may be extremely hot and could burn your skin.
7. Always be sure you have a firm footing. Be sure no one is below when using the tool in high locations.
8. The proper fastening torque may differ depending upon the kind or size of the bolt. Check the torque with a torque wrench.

SAVE THESE INSTRUCTIONS.

WARNING: DO NOT let comfort or familiarity with product (gained from repeated use) replace strict adherence to safety rules for the subject product.
MISUSE or failure to follow the safety rules stated in this instruction manual may cause serious personal injury.

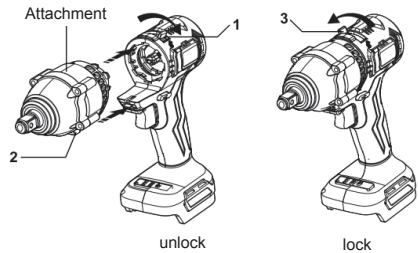
Impact wrench attachment

SPECIFICATIONS

Model:	DYB-2105
Square drive	6.35mm (1/4") +12.7 mm
Torque	300N.m
No load speed (RPM)	0-2,800 /min
Blows per minute	0 - 3,200 /min
Net weight	0.65kg

- Due to our continuing program of research and development, the specifications herein are subject to change without notice.
- Specifications may differ from country to country.

OPERATION



Installing or removing driver

• Install the attachments: Push the attachment release button to the unlock symbol (Fig1). Align the attachment locating block with the locating guide and push the attachment parallel to the bottom of the power unit (Fig. 2). Push the attachment release button in the lock direction (Fig3).

• Remove the attachments: Push the attachment release button to the unlock symbol (Fig1). Pull the attachments out parallel.

CAUTION: Always be sure that the tool is switched off and the battery cartridge is removed before carrying out any work on the tool.

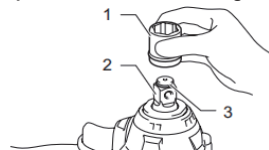
ASSEMBLY

CAUTION: Always be sure that the tool is switched off and the battery cartridge is removed before carrying out any work on the tool.

Selecting correct impact socket

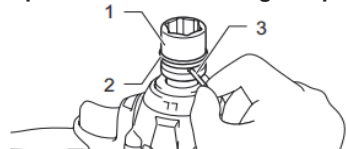
Always use the correct size impact socket for bolts and nuts. An incorrect size impact socket will result in inaccurate and inconsistent fastening torque and/or damage to the bolt or nut

For impact socket without O-ring and pin



► 1. Impact socket 2. Square drive 3. Ring spring

For impact socket with O-ring and pin



► 1. Impact socket 2. O-ring 3. Pin

To remove the impact socket, follow the installation procedures in reverse.

Cordless multi tool attachment safety warnings

WARNING: Always don't press the switch before installing attachment.

Cordless multi tool safety warnings

1. This power tool is intended to function for sawing, cutting, scraping and sanding. Read all safety warnings, instructions, illustrations and specifications provided with this power tool. Failure to follow all instructions listed below may result in electric shock, fire and/or serious injury.
2. Hold power tool by insulated gripping sur faces, when performing an operation where the cutting accessory may contact hidden wiring. Cutting accessory contacting a "live" wire may make exposed metal parts of the power tool "live" and could give the operator an electric shock.
3. Use clamps or another practical way to secure and support the workpiece to a stable platform. Holding the work by hand or against your body leaves it unstable and may lead to loss of control.
4. Always use safety glasses or goggles. Ordinary eye or sun glasses are NOT safety glasses.
5. Hold the tool firmly.
6. Make sure the application tool is not contacting the workpiece before the switch is turned on.
7. Keep hands away from moving parts.
8. Do not leave the tool running. Operate the tool only when hand-held.
9. Always switch off and wait for the blade to come to a complete stop before removing the blade from the workpiece.

SAVE THESE INSTRUCTIONS.

WARNING: DO NOT let comfort or familiarity with product (gained from repeated use) replace strict adherence to safety rules for the subject product.

MISUSE or failure to follow the safety rules stated in this instruction manual may cause serious personal injury.

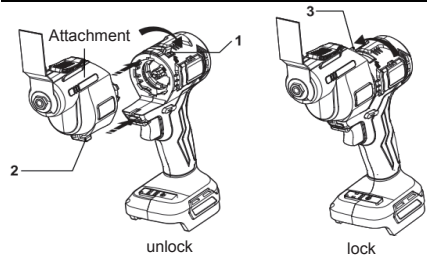
Oscillating tool attachment

SPECIFICATIONS

Model:	DYB-2106
Oscillation per minute	10,000 - 21,000 /min
Oscillation angle, left/right	1.5° (3.0° total)
Net weight	0.43kg

- Due to our continuing program of research and development, the specifications herein are subject to change without notice.
- Specifications may differ from country to country.

OPERATION



Installing or removing driver

- Install the attachments: Push the attachment release button to the unlock symbol (Fig1). Align the attachment locating block with the locating guide and push the attachment parallel to the bottom of the power unit (Fig. 2). Push the attachment release button in the lock direction (Fig3).
- Remove the attachments: Push the attachment release button to the unlock symbol (Fig1). Pull the attachments out parallel.

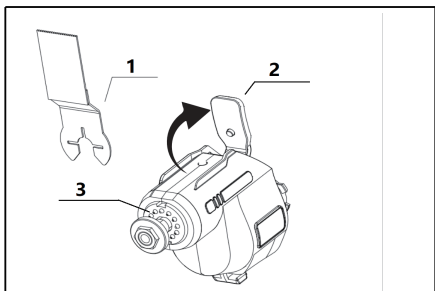
CAUTION: Always be sure that the tool is switched off and the battery cartridge is removed before carrying out any work on the tool.

ASSEMBLY

CAUTION: Always be sure that the tool is switched off and the battery cartridge is removed before carrying out any work on the tool.

Installing or removing application tool (optional accessory)

- WARNING:** Do not install application tool upside down. Installing application tool upside down may damage the tool and cause serious personal injury.
- Install attachment tool in the correct direction according to your work. Application tool can be installed at an angle of every 30 degree.



- 1. Application tool 2. Lock lever 3. Tool flange

- **Open the lock lever fully.**
Put an application tool (optional accessory) on the tool flange so that the protrusions of the tool flange fit in the holes in the application tool. return the lock lever to its original position.

Cordless multi tool attachment safety warnings

WARNING: Always don't press the switch before installing attachment.

Sander safety warnings

1. Always use safety glasses or goggles. Ordinary eye or sun glasses are NOT safety glasses.
2. Hold the tool firmly.
3. Do not leave the tool running. Operate the tool only when hand-held.
4. This tool has not been waterproofed, so do not use water on the workpiece surface.
5. Ventilate your work area adequately when you perform sanding operations.
6. Some material contains chemicals which may be toxic. Take caution to prevent dust inhalation and skin contact. Follow material supplier safety data.
7. Use of this tool to sand some products, paints and wood could expose user to dust containing hazardous substances. Use appropriate respiratory protection.
8. Be sure that there are no cracks or breakage on the pad before use. Cracks or breakage may cause a personal injury.

SAVE THESE INSTRUCTIONS.

WARNING: DO NOT let comfort or familiarity with product (gained from repeated use) replace strict adherence to safety rules for the subject product.

MISUSE or failure to follow the safety rules stated in this instruction manual may cause serious personal injury.

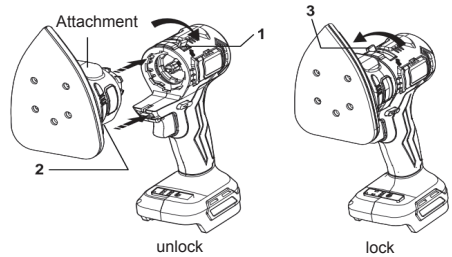
Sander attachment

SPECIFICATIONS

Model:	DYB-2107
No load speed (RPM)	0-10,000 /min
Dimensions	94x135mm
Net weight	0.31kg

- Due to our continuing program of research and development, the specifications herein are subject to change without notice.
- Specifications may differ from country to country.

OPERATION



Installing or removing driver

- Install the attachments: Push the attachment release button to the unlock symbol (Fig1). Align the attachment locating block with the locating guide and push the attachment parallel to the bottom of the power unit (Fig. 2). Push the attachment release button in the lock direction (Fig3).
- Remove the attachments: Push the attachment release button to the unlock symbol (Fig1). Pull the attachments out parallel.

CAUTION: Always be sure that the tool is switched off and the battery cartridge is removed before carrying out any work on the tool.

ASSEMBLY

CAUTION: Always be sure that the tool is switched off and the battery cartridge is removed before carrying out any work on the tool.

To install the abrasive disc, first remove all dirt or foreign matter from the pad. Then attach the abrasive disc to the pad. Be careful to align the holes in the abrasive disc with those in the pad.

Cordless multi tool attachment safety warnings

WARNING: Always don't press the switch before installing attachment.

CORDLESS JIG SAW SAFETY WARNINGS

1. Hold power tool by insulated gripping surfaces, when performing an operation where the cutting accessory may contact hidden wiring. Cutting accessory contacting a "live" wire may make exposed metal parts of the power tool "live" and could give the operator an electric shock.
2. Use clamps or another practical way to secure and support the workpiece to a stable platform. Holding the work by hand or against your body leaves it unstable and may lead to loss of control.
3. Always use safety glasses or goggles. Ordinary eye or sun glasses are NOT safety glasses.
4. Avoid cutting nails. Inspect workpiece for any nails and remove them before operation.
5. Do not cut oversize workpiece.
6. Check for the proper clearance beyond the workpiece before cutting so that the blade will not strike the floor, workbench, etc.
7. Hold the tool firmly.
8. Do not operate the tool at no-load unnecessarily.
9. Always use the correct dust mask/respirator for the material and application you are working with.

SAVE THESE INSTRUCTIONS.

WARNING: DO NOT let comfort or familiarity with product (gained from repeated use) replace strict adherence to safety rules for the subject product.
MISUSE or failure to follow the safety rules stated in this instruction manual may cause serious personal injury.

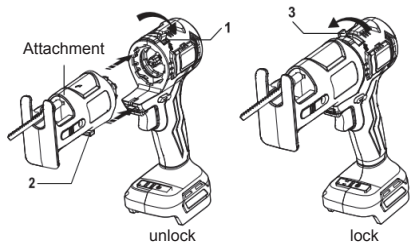
Jig saw attachment

SPECIFICATIONS

Model:	DYB-2108
Length of stroke	12,7mm
Strokes per minute	0-2,700/min
Net weight	0,34kg

- Due to our continuing program of research and development, the specifications herein are subject to change without notice.
- Specifications may differ from country to country.

OPERATION



Installing or removing driver

- Install the attachments: Push the attachment release button to the unlock symbol (Fig1). Align the attachment locating block with the locating guide and push the attachment parallel to the bottom of the power unit (Fig.2). Push the attachment release button in the lock direction (Fig3).
- Remove the attachments: Push the attachment release button to the unlock symbol (Fig1). Pull the attachments out parallel.

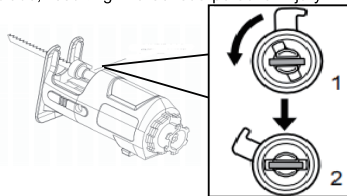
CAUTION: Always be sure that the tool is switched off and the battery cartridge is removed before carrying out any work on the tool.

ASSEMBLY

CAUTION: Always be sure that the tool is switched off and the battery cartridge is removed before carrying out any work on the tool.

Installing or removing saw blade

CAUTION: Always clean out all chips or foreign matter adhering to the blade and/or blade holder. Failure to do so may cause insufficient tightening of the blade, resulting in a serious personal injury.



- 1. Fixed position 2. Released position

Before installing the blade, make sure that the blade holder is in the released position.

To install the blade, insert the blade (teeth facing forward) into the blade holder until it latches. The blade holder moves to the fixed position by itself and the blade is locked. Pull the blade lightly to make sure that the blade does not fall off during operation.

Cordless multi tool attachment safety warnings

WARNING: Always don't press the switch before installing attachment.

Cordless reciprocating saw attachment safety warnings

1. Hold power tool by insulated gripping surfaces, when performing an operation where the cutting accessory may contact hidden wiring. Cutting accessory contacting a "live" wire may make exposed metal parts of the power tool "live" and could give the operator an electric shock.
2. Use clamps or another practical way to secure and support the workpiece to a stable platform. Holding the work by hand or against your body leaves it unstable and may lead to loss of control.
3. Always use safety glasses or goggles. Ordinary eye or sun glasses are NOT safety glasses.
4. Avoid cutting nails. Inspect workpiece for any nails and remove them before operation.
5. Do not cut oversize workpiece.
6. Check for the proper clearance beyond the workpiece before cutting so that the blade will not strike the floor, workbench, etc.
7. Hold the tool firmly.
8. Do not operate the tool at no-load unnecessarily.
9. Always use the correct dust mask/respirator for the material and application you are working with.

SAVE THESE INSTRUCTIONS.

WARNING: DO NOT let comfort or familiarity with product (gained from repeated use) replace strict adherence to safety rules for the subject product.

MISUSE or failure to follow the safety rules stated in this instruction manual may cause serious personal injury.

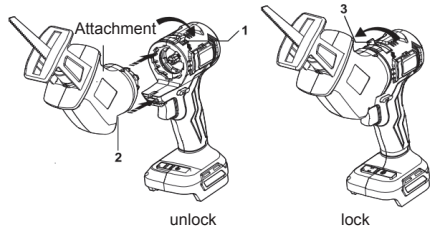
Reciprocating saw attachment

SPECIFICATIONS

Model:	DYB-2109
Length of stroke	15mm
Strokes per minute	0-3,300/min
Net weight	0.64kg

- Due to our continuing program of research and development, the specifications herein are subject to change without notice.
- Specifications may differ from country to country.

OPERATION



Installing or removing driver

- Install the attachments: Push the attachment release button to the unlock symbol (Fig1). Align the attachment locating block with the locating guide and push the attachment parallel to the bottom of the power unit (Fig. 2). Push the attachment release button in the lock direction (Fig3).
- Remove the attachments: Push the attachment release button to the unlock symbol (Fig1). Pull the attachments out parallel.

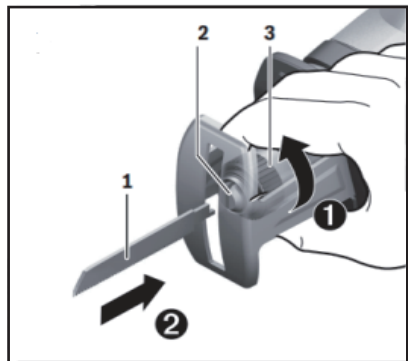
CAUTION: Always be sure that the tool is switched off and the battery cartridge is removed before carrying out any work on the tool.

ASSEMBLY

CAUTION: Always be sure that the tool is switched off and the battery cartridge is removed before carrying out any work on the tool.

Installing or removing saw blade

CAUTION: Always clean out all chips or foreign matter adhering to the blade and/or blade holder. Failure to do so may cause insufficient tightening of the blade, resulting in a serious personal injury.



1. Recipro saw blade
2. Blade clamp sleeve
3. Released position

NOTE: Always pull the release lever fully to the end. If not, the blade clamp sleeve does not come to the released position and the reciprocating saw blade cannot be inserted.

Cordless multi tool attachment safety warnings

WARNING: Always don't press the switch before installing attachment.

Cordless Chain saw attachment safety warnings

1. Keep all parts of the body away from the saw chain when the chain saw is operating. Before you start the chain saw, make sure the saw chain is not contacting anything. A moment of inattention while operating chain saws may cause entanglement of your clothing or body with the saw chain.
2. Always hold the chain saw with your right hand on the top handle and your left hand on the front handle. Holding the chain saw with a reversed hand configuration increases the risk of personal injury and should never be done.
3. Hold the power tool by insulated gripping surfaces only, because the saw chain may contact hidden wiring. Saw chains contacting a "live" wire may make exposed metal parts of the power tool "live" and could give the operator an electric shock.
4. Wear safety glasses and hearing protection. Further protective equipment for head, hands, legs and feet is recommended. Adequate protective clothing will reduce personal injury by flying debris or accidental contact with the saw chain.
5. Always keep proper footing.

SAVE THESE INSTRUCTIONS.

WARNING: DO NOT let comfort or familiarity with product (gained from repeated use) replace strict adherence to safety rules for the subject product.
MISUSE or failure to follow the safety rules stated in this instruction manual may cause serious personal injury.

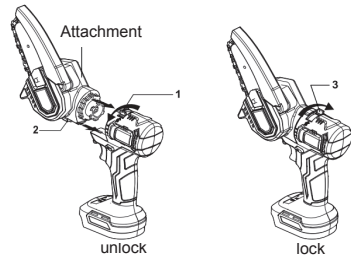
Chain Saw attachment

SPECIFICATIONS

Model:	DYB-2110
Standard guide bar length	4"
Strokes per minute	0-4,000/min
Chain speed	7 m/s
Net weight	0.58kg

- Due to our continuing program of research and development, the specifications herein are subject to change without notice.
- Specifications may differ from country to country.

OPERATION



Installing or removing driver

- Install the attachments: Push the attachment release button to the unlock symbol (Fig1). Align the attachment locating block with the locating guide and push the attachment parallel to the bottom of the power unit (Fig. 2). Push the attachment release button in the lock direction (Fig3).
- Remove the attachments: Push the attachment release button to the unlock symbol (Fig1). Pull the attachments out parallel.

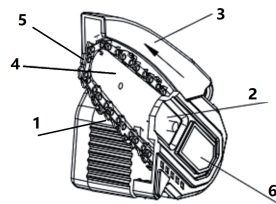
CAUTION: Always be sure that the tool is switched off and the battery cartridge is removed before carrying out any work on the tool.

ASSEMBLY

CAUTION: Always be sure that the tool is switched off and the battery cartridge is removed before carrying out any work on the tool.

Removing or installing saw chain

CAUTION: The saw chain and the guide bar are still hot just after the operation. Let them cool down enough before carrying out any work on the tool.



- 1. Chain adjusting screw 2. Retaining nut
 3. Front hand guard 4. Guide bar
 5. Saw chain 6. Sprocket cover

CAUTION: Check the direction of the saw chain. Match the direction of the saw chain with that of the mark on the chain saw body.

To remove the saw chain, perform the following steps:

1. Release the chain brake by pulling the front hand guard.
2. Loosen the chain adjusting screw, then the retaining nut.
3. Remove the sprocket cover then remove the saw chain and guide bar from the chain saw body.

Cordless multi tool attachment safety warnings

WARNING: Always don't press the switch before installing attachment.

IMPORTANT SAFETY INSTRUCTIONS

1. Avoid accidental starts. Move switch on unit to OFF position before connecting or disconnecting battery pack.
2. Water spray must never be directed towards any electric wiring or fatal electric shock may occur.
3. The narrow pin point stream is very powerful. It is not recommended for use on painted surfaces, wood surfaces or items attached with an adhesive backing.
4. Keep operating area clear of all persons and animals.
5. Always use both hands when operating pressure washer to maintain complete control of the wand.
6. Do not touch nozzle or water spray while operating. Never place hands in front of nozzle.
7. Wear safety goggles while operating. Wear protective clothing and footwear to protect against accidental spraying.
8. Disconnect battery pack when not in use and prior to the detaching of the high pressure hose.
9. Do not operate or store this product in temperatures below 40 °F (4 °C). Freeze damage is not covered by the warranty
10. Carefully observe all chemical instructions and warnings before using. Use only approved pressure washer cleaners. Do not use bleach, chlorine, or any cleaners containing acids. Always follow manufacturer's label recommendations for proper use of cleaners. Always protect eyes, skin and respiratory system from cleaners.
11. Never spray flammable liquids or use pressure washer in areas containing combustible dust, liquid, or vapors.

SAVE THESE INSTRUCTIONS.

WARNING: DO NOT let comfort or familiarity with product (gained from repeated use) replace strict adherence to safety rules for the subject product.

MISUSE or failure to follow the safety rules stated in this instruction manual may cause serious personal injury.

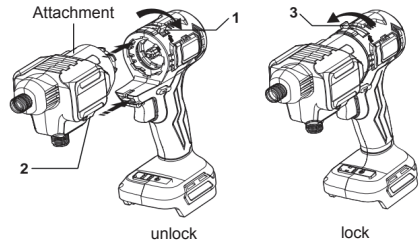
Cleaning machine attachment

SPECIFICATIONS

Model:	DYB-2111
Flow rate	2.4/min
rated pressure	1.8/3.0Mpa
Net weight	0.38kg

- Due to our continuing program of research and development, the specifications herein are subject to change without notice.
- Specifications may differ from country to country.

OPERATION



Installing or removing driver

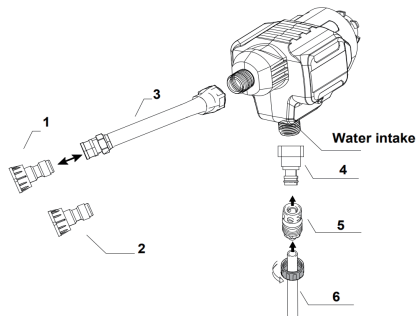
- Install the attachments: Push the attachment release button to the unlock symbol (Fig1). Align the attachment locating block with the locating guide and push the attachment parallel to the bottom of the power unit (Fig. 2). Push the attachment release button in the lock direction (Fig3).
- Remove the attachments: Push the attachment release button to the unlock symbol (Fig1). Pull the attachments out parallel.

CAUTION: Always be sure that the tool is switched off and the battery cartridge is removed before carrying out any work on the tool.

ASSEMBLY

CAUTION: Always be sure that the tool is switched off and the battery cartridge is removed before carrying out any work on the tool.

To Attach the Spray Wands or other Attachment



- 1. Quick connect nozzles (0°) 2. Turbo nozzle
3. Pressure spray wand 4. connector
5. Quick connect hose connector 6. Suction hose

To Attach Nozzle to Spray Wand

To connect the nozzle 【1、2】 to the spray wand 3, pull the quick connect collar toward the spray wand and insert the appropriate nozzle. Release the quick connect collar to lock the nozzle in place.

To ensure nozzle is locked into place, give the nozzle a firm tug after the quick connect collar has locked into place.

Cordless multi tool attachment safety warnings

WARNING : Always don't press the switch before installing attachment.

Cordless Blower Safety Instructions

1. Always wear substantial footwear and long trousers while operating the machine.
2. Do not wear loose clothing or jewellery that can be drawn into the air inlet. Keep long hair away from the air inlets.
3. Always use protective goggles, a cap and mask when using the machine. Ordinary eye or sun glasses are NOT safety glasses.
4. To prevent dust irritation the wearing of a face mask is recommended.
5. While operating the machine, always wear non-slip and protective footwear. Non-skid, closed-toed safety boots and shoes will reduce the risk of injury
6. Never operate the machine while people, especially children, or pets are nearby.
7. Switch off the machine and remove the battery cartridge and make sure that all moving parts have come to a complete stop
 - whenever you leave the machine.
 - before clearing blockages.
 - before checking, cleaning or working on the machine.
 - if the machine starts to vibrate abnormally.
 - whenever you convert the machine from blower to vacuum, and vice versa.

SAVE THESE INSTRUCTIONS.

WARNING: DO NOT let comfort or familiarity with product (gained from repeated use) replace strict adherence to safety rules for the subject product.
MISUSE or failure to follow the safety rules stated in this instruction manual may cause serious personal injury.

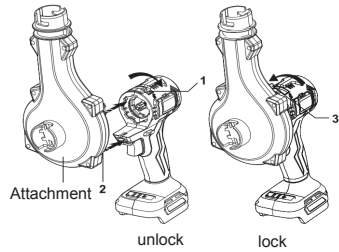
Blower attachment

SPECIFICATIONS

Model:	DYB-2112
No load speed (RPM)	0-24,000 /min
Air volume	2.8 m ³ /min
Net weight	0.39kg

- Due to our continuing program of research and development, the specifications herein are subject to change without notice.
- Specifications may differ from country to country.

OPERATION



Installing or removing driver

- Install the attachments: Push the attachment release button to the unlock symbol (Fig1). Align the attachment locating block with the locating guide and push the attachment parallel to the bottom of the power unit (Fig. 2). Push the attachment release button in the lock direction (Fig3).
- Remove the attachments: Push the attachment release button to the unlock symbol (Fig1). Pull the attachments out parallel.

CAUTION: Always be sure that the tool is switched off and the battery cartridge is removed before carrying out any work on the tool.

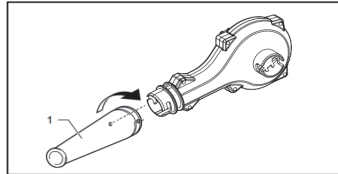
ASSEMBLY

CAUTION: Always be sure that the tool is switched off and the battery cartridge is removed before carrying out any work on the tool.

Installing or removing the nozzle

Optional accessory

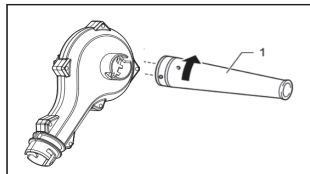
Align the protrusions on the nozzle with the grooves on the main unit, then insert the nozzle into the main unit, and then turn it to lock it into place.



► 1.Nozzle

To remove the nozzle, perform the installation procedure in reverse.

Assembly for vacuuming



► 1.Nozzle

Align the protrusions on the nozzle with the grooves on the main unit, then insert the nozzle into the main unit, and then turn it to lock it into place.

Cordless multi tool attachment safety warnings

WARNING: Always don't press the switch before installing attachment.

CORDLESS GRINDER SAFETY WARNINGS

Safety Warnings Common for Grinding, Sanding, Wire Brushing, or Abrasive Cutting-Off Operations:

1. This power tool is intended to function as a grinder, sander, wire brush or cut-off tool. Read all safety warnings, instructions, illustrations and specifications provided with this power tool. Failure to follow all instructions listed below may result in electric shock, fire and/or serious injury.
2. Operations such as polishing are not recommended to be performed with this power tool. Operations for which the power tool was not designed may create a hazard and cause personal injury.
3. Do not use accessories which are not specifically designed and recommended by the tool manufacturer. Just because the accessory can be attached to your power tool, it does not assure safe operation.
4. The rated speed of the accessory must be at least equal to the maximum speed marked on the power tool. Accessories running faster than their rated speed can break and fly apart.
5. The outside diameter and the thickness of your accessory must be within the capacity rating of your power tool. Incorrectly sized accessories cannot be adequately guarded or controlled.

SAVE THESE INSTRUCTIONS.

WARNING: DO NOT let comfort or familiarity with product (gained from repeated use) replace strict adherence to safety rules for the subject product. MISUSE or failure to follow the safety rules stated in this instruction manual may cause serious personal injury.

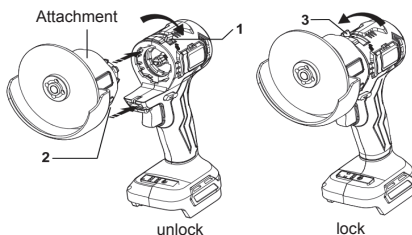
Angle Grinder attachment

SPECIFICATIONS

Model:	DYB-2113/100	DYB-2113/125
Wheel diameter	100 mm (4")	125 mm (5")
Strokes per minute	8,000/min	
Net weight	0.26kg	0.35kg

- Due to our continuing program of research and development, the specifications herein are subject to change without notice.
- Specifications may differ from country to country.

OPERATION



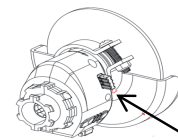
Installing or removing driver

- Install the attachments: Push the attachment release button to the unlock symbol (Fig1). Align the attachment locating block with the locating guide and push the attachment parallel to the bottom of the power unit (Fig. 2). Push the attachment release button in the lock direction (Fig3).
- Remove the attachments: Push the attachment release button to the unlock symbol (Fig1). Pull the attachments out parallel.

ASSEMBLY

CAUTION: Always be sure that the tool is switched off and the battery cartridge is removed before carrying out any work on the tool.

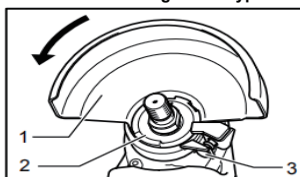
CAUTION: Never actuate the shaft lock when the is moving. The tool may be damaged.



1. Shaft lock

Press the shaft lock to prevent spindle rotation when installing or removing accessories.

For tool with locking screw type wheel guard



► 1. Wheel guard 2. Bearing box 3. Screw

Mount the wheel guard with the protrusions on the wheel guard band aligned with the notches on the bearing box. Then rotate the wheel guard around 180° counterclockwise. Be sure to tighten the screw securely.

To remove wheel guard, follow the installation procedure in reverse.

Installing or removing abrasive disc

To tighten the lock nut, press the shaft lock firmly so that the spindle cannot revolve, then use the lock nut wrench and securely tighten clockwise.

To remove the wheel, follow the installation procedure in reverse.

Cordless multi tool attachment safety warnings

WARNING: Always don't press the switch before installing attachment.

CORDLESS ROTARY HAMMER SAFETY WARNINGS

1. **Wear ear protectors.** Exposure to noise can cause hearing loss.
2. **Use auxiliary handle(s), if supplied with the tool.** Loss of control can cause personal injury.
3. **Hold power tool by insulated gripping sur faces, when performing an operation where the cutting accessory may contact hidden wiring.** Cutting accessory contacting a "live" wire may make exposed metal parts of the power tool "live" and could give the operator an electric shock.
4. **Wear a hard hat (safety helmet), safety glasses and/or face shield.** Ordinary eye or sun glasses are NOT safety glasses. It is also highly recom mended that you wear a dust mask and thickly padded gloves.
5. **Be sure the bit is secured in place before operation.**
6. **Always be sure you have a firm footing.** Be sure no one is below when using the tool in high locations.
7. **Hold the tool firmly with both hands.**
8. **Keep hands away from moving parts.**
9. **Always be sure that the tool is switched off and the battery cartridge and the bit are removed before handing the tool to other person.**

SAVE THESE INSTRUCTIONS.

WARNING: DO NOT let comfort or familiarity with product (gained from repeated use) replace strict adherence to safety rules for the subject product.

MISUSE or failure to follow the safety rules stated in this instruction manual may cause serious personal injury.

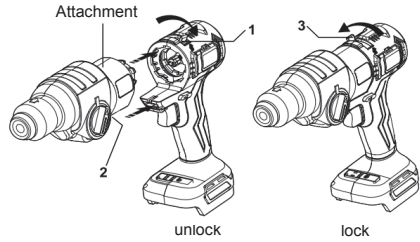
Combination Hammer attachment

SPECIFICATIONS

Model:	DYB-2114
No load speed (RPM)	0-2.000 /min
Blows per minute	0-5500/min
Net weight	0,68kg

- Due to our continuing program of research and development, the specifications herein are subject to change without notice.
- Specifications may differ from country to country.

OPERATION



Installing or removing driver

- Install the attachments: Push the attachment release button to the unlock symbol (Fig1). Align the attachment locating block with the locating guide and push the attachment parallel to the bottom of the power unit (Fig. 2). Push the attachment release button in the lock direction (Fig3).

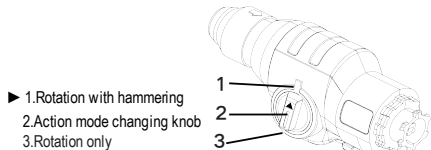
- Remove the attachments: Push the attachment release button to the unlock symbol (Fig1). Pull the attachments out parallel.

CAUTION: Always be sure that the tool is switched off and the battery cartridge is removed before carrying out any work on the tool.

ASSEMBLY

CAUTION: Always be sure that the tool is switched off and the battery cartridge is removed before carrying out any work on the tool.

Selecting the action mode

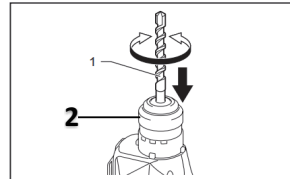


- 1. Rotation with hammering
- 2. Action mode changing knob
- 3. Rotation only

For drilling in concrete, masonry , etc. , rotate the action mode changing knob to the (1)

For drilling in wood, metal or plastic materials, rotate the action mode changing knob to the (2)

Installing or removing drill bit



► 1. Drill bit 2. Chuck cover

Insert the drill bit into the tool. Turn the drill bit and push it in until it engages.

After installing the drill bit, always make sure that the drill bit is securely held in place by trying to pull it out.

To remove the drill bit, pull the chuck cover down all the way and pull the drill bit out.

Cordless multi tool attachment safety warnings

WARNING: Always don't press the switch before installing attachment.

HEDGE TRIMMER SAFETY WARNINGS

1. Keep all parts of the body away from the cutter blade. Do not remove cut material or hold material to be cut when blades are moving. Make sure the switch is off when clearing jammed material. Blades coast after turn off. A moment of inattention while operating the hedge trimmer may result in serious personal injury.
2. Carry the hedge trimmer by the handle with the cutter blade stopped. Proper handling of the hedge trimmer will reduce possible personal injury from the cutter blades.
3. Hold the power tool by insulated gripping surfaces only, because the cutter blade may contact hidden wiring. Cutter blades contacting a "live" wire may make exposed metal parts of the power tool "live" and could give the operator an electric shock.
4. **DANGER - Keep hands away from blade.** Contact with blade will result in serious personal injury.
5. Do not use the hedge trimmer in the rain or in wet or very damp conditions. The electric motor is not waterproof.
6. First-time users should have an experienced hedge trimmer user show them how to use the trimmer.
7. The hedge trimmer must not be used by children or young persons under 18 years of age. Young persons over 16 years of age may be exempted from this restriction if they are undergoing training under the supervision of an expert.

WARNING: DO NOT let comfort or familiarity with product (gained from repeated use) replace strict adherence to safety rules for the subject product.

MISUSE or failure to follow the safety rules stated in this instruction manual may cause serious personal injury.

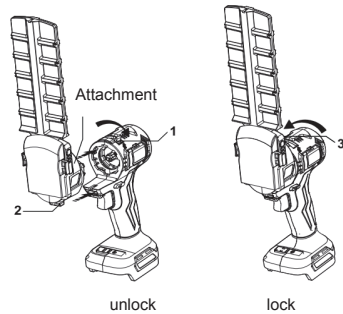
Hedge Trimmer attachment

SPECIFICATIONS

Model:	DYB-2115
No load speed (RPM)	0-1,200 /min
Blade length	160mm
Net weight	0.63kg

- Due to our continuing program of research and development, the specifications herein are subject to change without notice.
- Specifications may differ from country to country.

OPERATION



Installing or removing driver

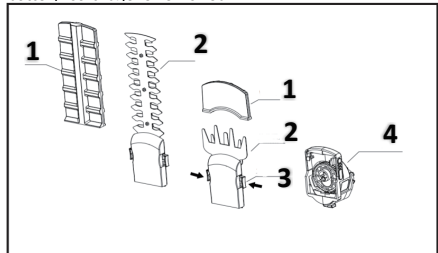
- Install the attachments: Push the attachment release button to the unlock symbol (Fig1). Align the attachment locating block with the locating guide and push the attachment parallel to the bottom of the power unit (Fig. 2). Push the attachment release button in the lock direction (Fig3).
- Remove the attachments: Push the attachment release button to the unlock symbol (Fig1). Pull the attachments out parallel.

CAUTION: Always be sure that the tool is switched off and the battery cartridge is removed before carrying out any work on the tool.

ASSEMBLY

Removing or installing shear blade

CAUTION: Before removing or installing shear blade, always be sure that the tool is switched off and the battery cartridge is removed.



1. Shear blade
2. Blade cover
3. Button
4. Hedge Trimmer attachment

Blade change release button: Press the buttons on both sides to quickly change the blade of the mower/trimmer.

Cordless multi tool attachment safety warnings

WARNING: Always don't press the switch before installing attachment.

Cordless inflator safety warnings

1. When inflating objects, connect the air chuck, adapter, and valve tightly. Otherwise, the object, hose, air chuck, or adapter may be damaged and you may be injured.
2. Release air pressure slowly. When removing the hose after inflating objects, hold the object, hose, and air chuck firmly. The object, air chuck, or adapter may bounce due to exhaust air and cause an injury.
3. Do not inflate object beyond the maximum pressure of the object. Otherwise, the tool or object may be damaged and you may be injured.
4. Do not use the tool beyond the maximum output pressure of the tool. Using the tool at output pressure greater than the maximum output pressure of the tool may burst the object or the tool.
5. Inflate the objects intended to be inflated by the manufacturer only, such as tire, sport ball, or small floating tube. Inflating other objects may damage them and cause an injury.
6. When inflating objects, check the pressure gauge, status of the tool and object, and check that there is no air leak. Otherwise, the tool or object may be damaged and cause an injury.
7. When carrying the tool, hold the handle of the tool. Do not hold or pull the hose. The tool may be damaged and cause an injury.

SAVE THESE INSTRUCTIONS.

WARNING: DO NOT let comfort or familiarity with product (gained from repeated use) replace strict adherence to safety rules for the subject product.

MISUSE or failure to follow the safety rules stated in this instruction manual may cause serious personal injury.

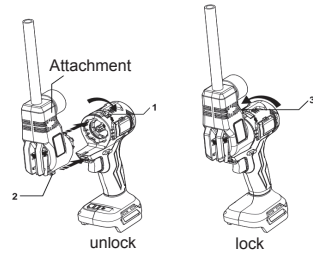
Inflator attachment

SPECIFICATIONS

Model:	DYB-2116
No load speed (RPM)	0-3,300 /min
Maximum air pressure	0-6.9BAR
Net weight	0.45kg

- Due to our continuing program of research and development, the specifications herein are subject to change without notice.
- Specifications may differ from country to country.

OPERATION



Installing or removing driver

- Install the attachments: Push the attachment release button to the unlock symbol (Fig1). Align the attachment locating block with the locating guide and push the attachment parallel to the bottom of the power unit (Fig. 2). Push the attachment release button in the lock direction (Fig3).

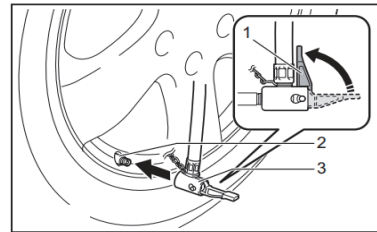
- Remove the attachments: Push the attachment release button to the unlock symbol (Fig1). Pull the attachments out parallel.

CAUTION: Always be sure that the tool is switched off and the battery cartridge is removed before carrying out any work on the tool.

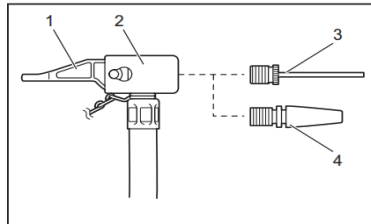
ASSEMBLY

CAUTION: Always be sure that the tool is switched off and the battery cartridge is removed before carrying out any work on the tool.

Using the Schrader valve adapter



- 1. Air chuck clamp 2. Valve stem 3. Air chuck



- 1. Air chuck clamp 2. Air chuck 3. Sport ball needle
4. Tapered adapter

You can inflate small items such as sport balls or floating tubes. To inflate sport balls, use the sport ball needle. To inflate floating tubes, use the tapered adapter.

Cordless multi tool attachment safety warnings

WARNING: Always don't press the switch before installing attachment.

Cordless trimmer safety warnings

1. Hold power tool by insulated gripping surfaces, because the cutter may contact its own cord. Cutting a "live" wire may make exposed metal parts of the power tool "live" and shock the operator.
2. Use clamps or another practical way to secure and support the workpiece to a stable platform. Holding the work by your hand or against the body leaves it unstable and may lead to loss of control.
3. Wear hearing protection during extended period of operation.
4. Handle the bits very carefully.
5. Check the bit carefully for cracks or damage before operation. Replace cracked or damaged bit immediately.
6. Avoid cutting nails. Inspect for and remove all nails from the workpiece before operation.
7. Hold the tool firmly.
8. Keep hands away from rotating parts.
9. Make sure the bit is not contacting the workpiece before the switch is turned on.
10. Let it run for a while. Watch for vibration or wobbling that could indicate improperly installed bit.
11. Be careful of the bit rotating direction and the feed direction.
12. Use bits of the correct shank diameter suitable for the speed of the tool.

SAVE THESE INSTRUCTIONS.

WARNING: DO NOT let comfort or familiarity with product (gained from repeated use) replace strict adherence to safety rules for the subject product.

MISUSE or failure to follow the safety rules stated in this instruction manual may cause serious personal injury.

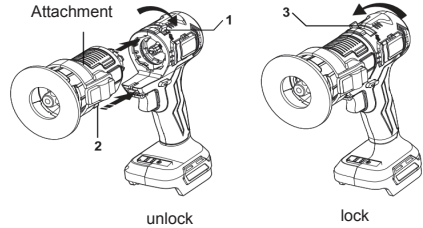
Trimmer attachment

SPECIFICATIONS

Model:	DYB-2117
No load speed (RPM)	0-11,000/min
Collet chuck capacity	1/4"
Net weight	0.6kg

- Due to our continuing program of research and development, the specifications herein are subject to change without notice.
- Specifications may differ from country to country.

OPERATION



Installing or removing driver

- Install the attachments: Push the attachment release button to the unlock symbol (Fig1). Align the attachment locating block with the locating guide and push the attachment parallel to the bottom of the power unit (Fig. 2). Push the attachment release button in the lock direction (Fig3).
- Remove the attachments: Push the attachment release button to the unlock symbol (Fig1). Pull the attachments out parallel.

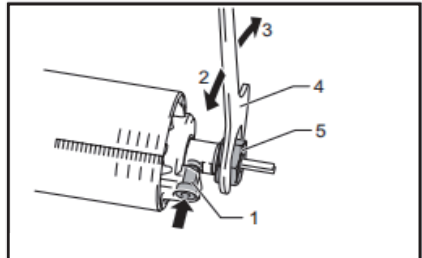
CAUTION: Always be sure that the tool is switched off and the battery cartridge is removed before carrying out any work on the tool.

ASSEMBLY

CAUTION: Always be sure that the tool is switched off and the battery cartridge is removed before carrying out any work on the tool.

Installing or removing trimmer bit

NOTICE: Do not tighten the collet nut without inserting the bit. The collet cone may break.



- 1. Shaft lock 2. Loosen 3. Tighten 4. Wrench 5. Collet nut

Insert the trimmer bit all the way into the collet cone. Press the shaft lock and tighten the collet nut with the wrench or tighten the collet nut securely with the two wrenches. To remove the bit, follow the installation procedure in reverse.

Cordless multi tool attachment safety warnings

WARNING: Always don't press the switch before installing attachment.

Cordless circular saw safety warnings

- 1. DANGER:** Keep hands away from cutting area and the blade. Keep your second hand on auxiliary handle, or motor housing. If both hands are holding the saw, they cannot be cut by the blade.
- 2. Do not reach underneath the workpiece.** The guard cannot protect you from the blade below the workpiece.
- 3. Adjust the cutting depth to the thickness of the workpiece.** Less than a full tooth of the blade teeth should be visible below the workpiece.
- 4. Never hold piece being cut in your hands or across your leg. Secure the workpiece to a stable platform.** It is important to support the work properly to minimize body exposure, blade binding, or loss of control.
- 5. Hold the power tool by insulated gripping surfaces only, when performing an operation where the cutting tool may contact hidden wiring.** Contact with a "live" wire will also make exposed metal parts of the power tool "live" and could give the operator an electric shock.
- 6. When ripping, always use a rip fence or straight edge guide.** This improves the accuracy of cut and reduces the chance of blade binding.
- 7. Always use blades with correct size and shape**

SAVE THESE INSTRUCTIONS.

WARNING: DO NOT let comfort or familiarity with product (gained from repeated use) replace strict adherence to safety rules for the subject product.

MISUSE or failure to follow the safety rules stated in this instruction manual may cause serious personal injury.

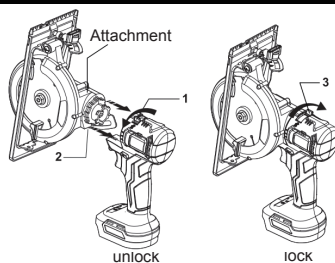
Circular Saw attachment

SPECIFICATIONS

Model:	DYB-2118
Blade diameter	125mm
Max. Cutting depth	(at 0°) 41mm (at 45°) 30mm
No load speed (RPM)	0-4,000 /min
Net weight	0.8kg

- Due to our continuing program of research and development, the specifications herein are subject to change without notice.
- Specifications may differ from country to country.

OPERATION



Installing or removing driver

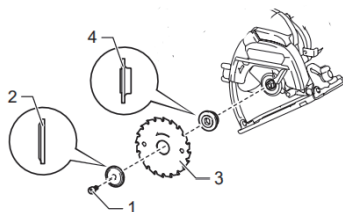
- Install the attachments: Push the attachment release button to the unlock symbol (Fig.1). Align the attachment locating block with the locating guide and push the attachment parallel to the bottom of the power unit (Fig. 2). Push the attachment release button in the lock direction (Fig.3).
- Remove the attachments: Push the attachment release button to the unlock symbol (Fig.1). Pull the attachments out parallel.

CAUTION: Always be sure that the tool is switched off and the battery cartridge is removed before carrying out any work on the tool.

ASSEMBLY

CAUTION: Always be sure that the tool is switched off and the battery cartridge is removed before carrying out any work on the tool.

Removing or installing circular saw blade



- 1. Hex bolt 2. Outer flange 3. Circular saw blade 4. Inner flange

To remove the circular saw blade, press the shaft lock fully so that the circular saw blade cannot revolve and use the wrench to loosen the hex bolt counterclockwise. Then remove the hex bolt, outer flange and circular saw blade.

CAUTION: Be sure the circular saw blade is installed with teeth pointing up at the front of the tool.

To install the circular saw blade, follow the removal procedure in reverse. BE SURE TO TIGHTEN THE HEX BOLT CLOCKWISE SECURELY.

